

Morecambe Offshore Windfarm: Generation Assets Environmental Statement

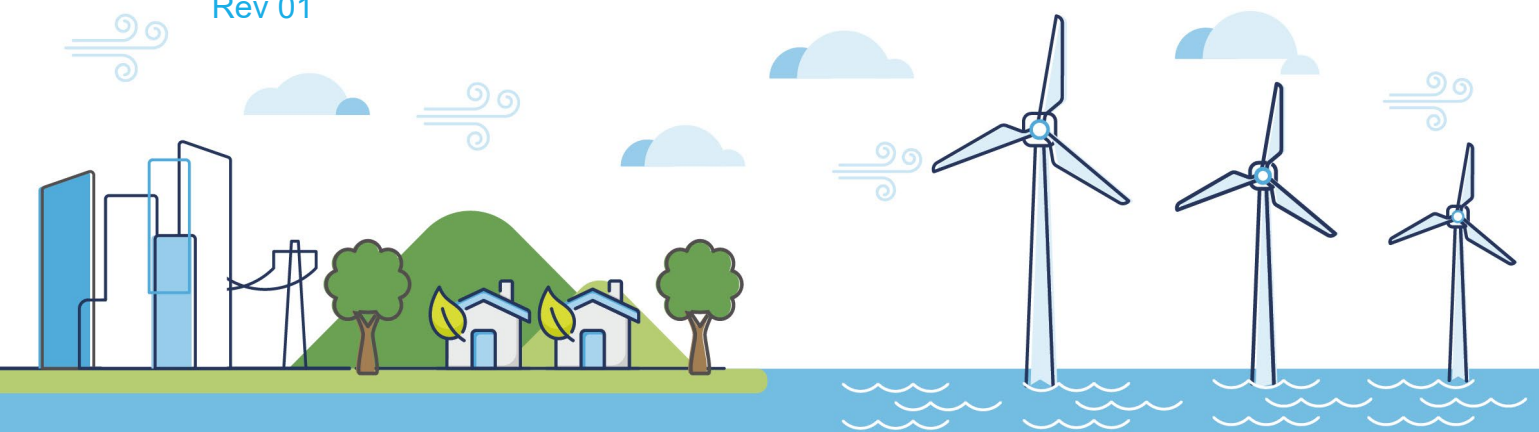
Volume 5

Appendix 15.3 Generation Assets Setting Assessment Cultural Heritage Viewpoint 4

PINS Document Reference: 5.3.15.4

APFP Regulation: 5(2)(a)

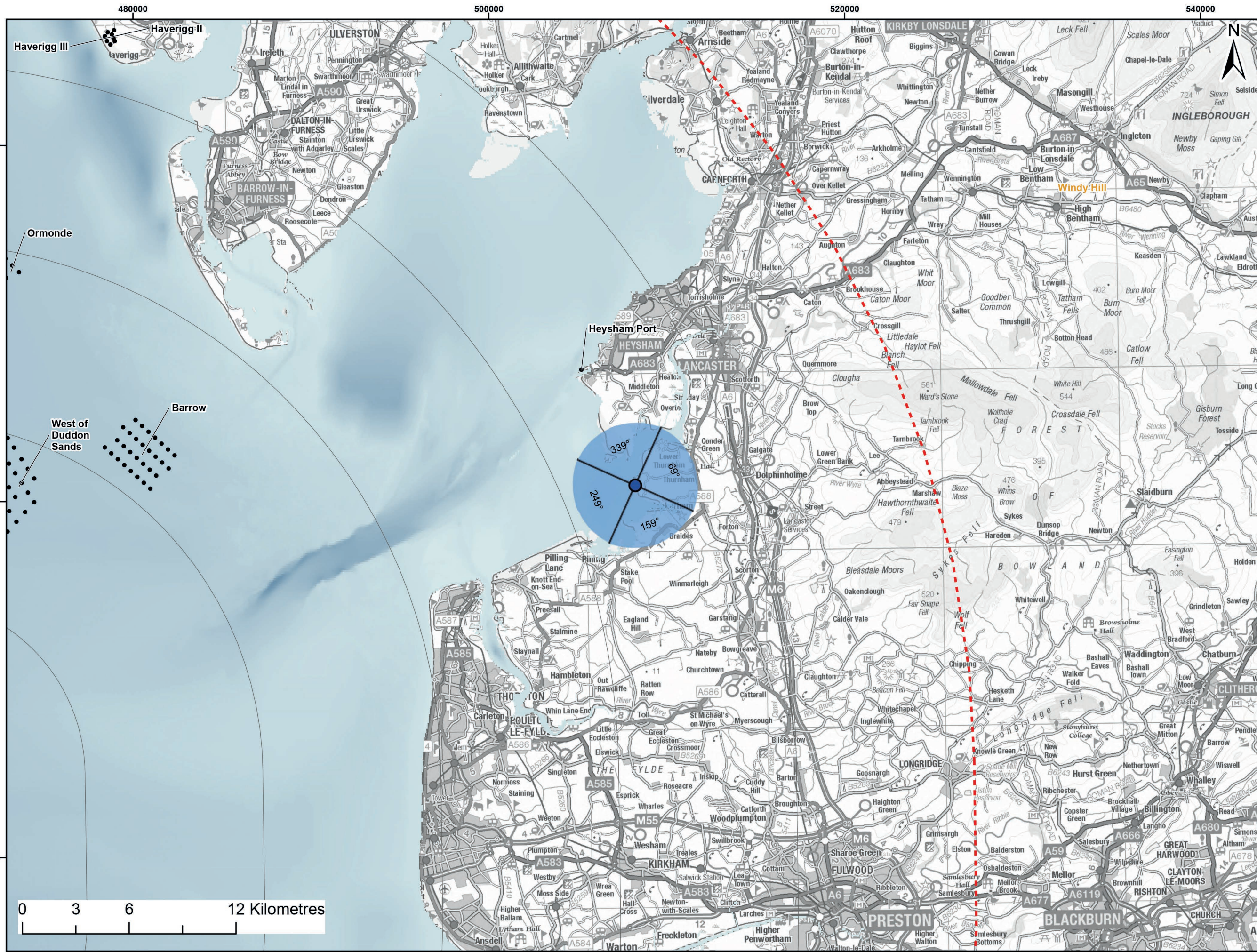
Rev 01



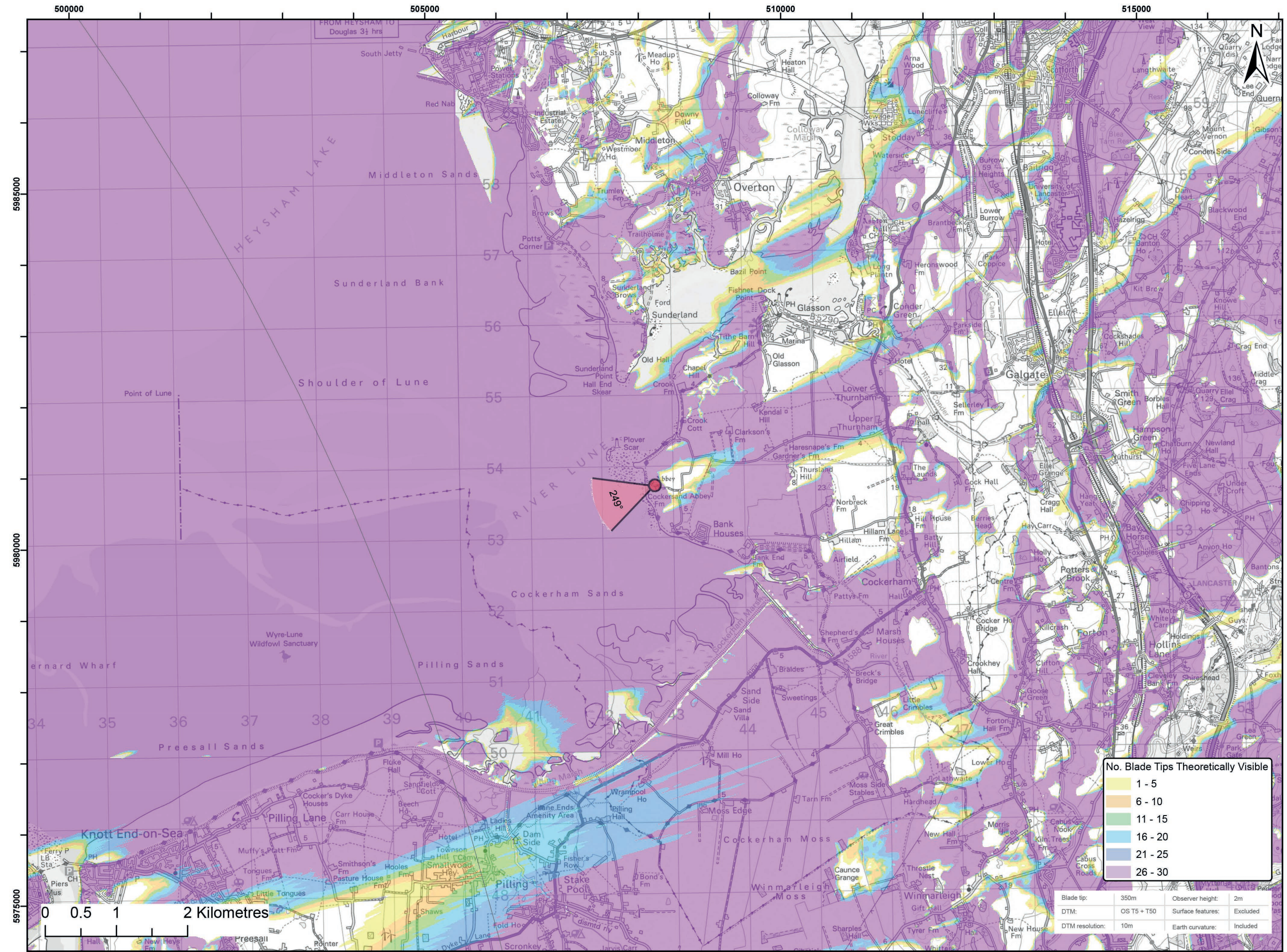
Document History

Doc No	MOR001-FLO-CON-ENV-FIG-1154	Rev	01
Alt Doc No	PC1165-RHD-ES-XX-DG-Z-0027		
Document Status	Approved for Use	Doc Date	May 2024
PINS Doc Ref	5.3.15.4	APFP Ref	5(2)(a)

Rev	Date	Doc Status	Originator	Reviewer	Approver	Modifications
01	May 2024	Approved for Use	Optimised Environments Ltd	Morecambe Offshore Windfarm Ltd	Morecambe Offshore Windfarm Ltd	n/a



Viewpoint Location Plan Baseline Panorama (90 Degree View)
Scale: 1:200,000



Viewpoint Location Plan (53.5 Degree View)
Scale: 1:50,000



Legend:

- Morecambe Offshore Wind Farm Status
- ▼ - Assumed WTG locations (30 x BT 310m(HAT))
- ▼ 90 Degree Field of View
- ▼ 53.5 Degree Field of View
- 10km Radii
- 60km Study Area
- Morecambe Offshore Windfarm Site

Cumulative Wind Farms

- Operational
- Under Construction
- Consented
- Application
- Scoping
- Pre-Application

© Crown copyright and database rights (2023) Ordnance Survey 0100031673.

Report:
Morecambe Offshore Windfarm: Generation Assets Environmental Statement

Title:
Cultural Heritage Viewpoint 4:
1018919 - Cockersand Abbey

Figure: 1.6a	Drawing No: 211609				
Revision: P02	Date: 08/03/2024	Drawn: RA	Checked: SM	Size: A3	Scale: 1:50,000

Co-ordinate system: WGS 1984 UTM Zone 30N





Baseline photograph

This image provides landscape and visual context only



Wireline drawing

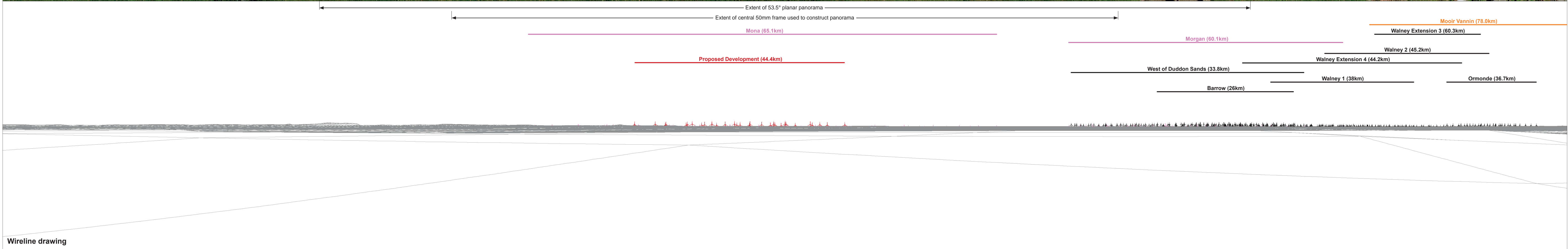
OS reference: 342742 E 453731 N	Horizontal field of view: 90° (cylindrical projection)	Camera: Canon EOS 5D Mark II
Eye level: 10.5 m AOD	Principal distance: 522 mm	Lens: EF50mm f/1.4 USM
Direction of view: 159°		Camera height: 1.5 m AGL
Nearest turbine: 44.361 km		Date and time: 16/09/2022, 10:12

Figure: 1.6b
CH Viewpoint 4: 1018919 - Cockersand Abbey



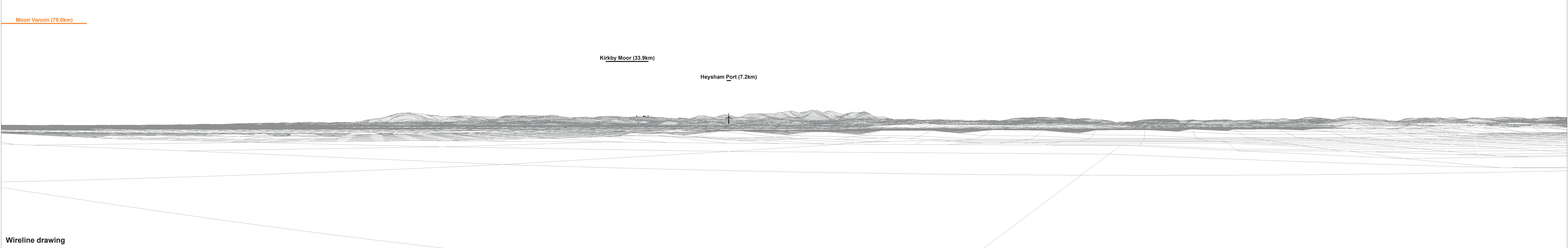
Baseline photograph

This image provides landscape and visual context only



Wireline drawing

OS reference:	342742 E 453731 N	Horizontal field of view:	90° (cylindrical projection)	Camera:	Canon EOS 5D Mark II	Figure: 1.6c CH Viewpoint 4: 1018919 - Cocksand Abbey
Eye level:	10.5 m AOD	Principal distance	522 mm	Lens:	EF50mm f/1.4 USM	
Direction of view:	249°			Camera height:	1.5 m AGL	
Nearest turbine:	44.361 km			Date and time:	16/09/2022, 10:12	



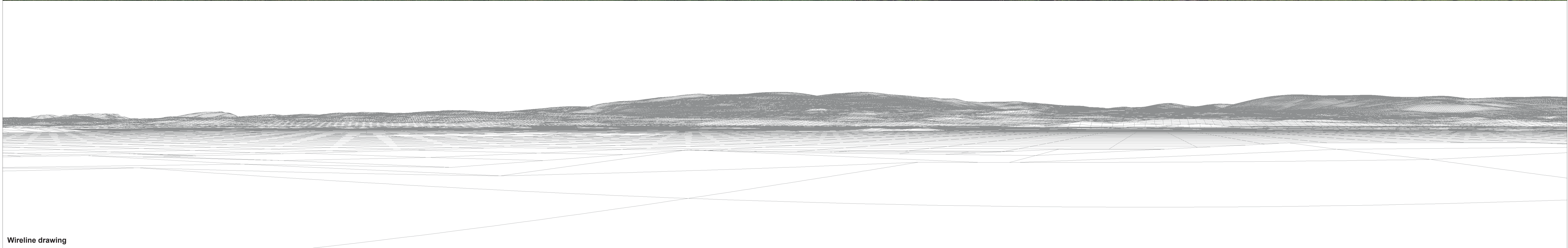
OS reference:	342742 E 453731 N	Horizontal field of view:	90° (cylindrical projection)	Camera:	Canon EOS 5D Mark II
Eye level:	10.5 m AOD	Principal distance	522 mm	Lens:	EF50mm f/1.4 USM
Direction of view:	339°			Camera height:	1.5 m AGL
Nearest turbine:	44.361 km			Date and time:	16/09/2022, 10:12

Figure: 1.6d
CH Viewpoint 4: 1018919 - Cockersand Abbey



Baseline photograph

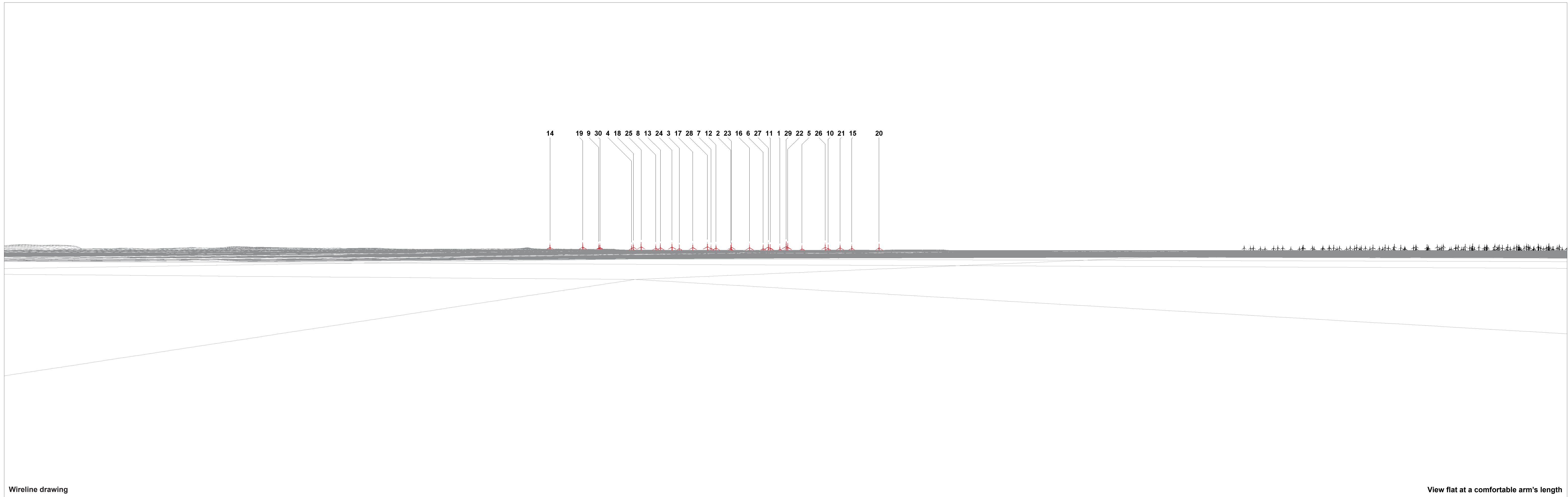
This image provides landscape and visual context only



Wireline drawing

OS reference:	342742 E 453731 N	Horizontal field of view:	90° (cylindrical projection)	Camera:	Canon EOS 5D Mark II
Eye level:	10.5 m AOD	Principal distance:	522 mm	Lens:	EF50mm f/1.4 USM
Direction of view:	69°			Camera height:	1.5 m AGL
Nearest turbine:	44.361 km			Date and time:	16/09/2022, 10:12

Figure: 1.6e
CH Viewpoint 4: 1018919 - Cocksand Abbey



Wireline drawing

View flat at a comfortable arm's length

OS reference: 342742 E 453731 N
 Eye level: 10.5 m AOD
 Direction of view: 249°
 Nearest turbine: 44.361 km

Horizontal field of view: 53.5° (planar projection)
 Principal distance: 812.5 mm
 Paper size: 841 x 297 mm (half A1)
 Correct printed image size: 820 x 260 mm

Camera: Canon EOS 5D Mark II
 Lens: EF50mm f/1.4 USM
 Camera height: 1.5 m AGL
 Date and time: 16/09/2022, 10:12

Figure: 1.6f
 CH Viewpoint 4: 1018919 - Cockersand Abbey



Baseline Photograph

View flat at a comfortable arm's length

OS reference:	342742 E 453731 N	Horizontal field of view:	53.5° (planar projection)	Camera:	Canon EOS 5D Mark II
Eye level:	10.5 m AOD	Principal distance	812.5 mm	Lens:	EF50mm f/1.4 USM
Direction of view:	249°	Paper size:	841 x 297 mm (half A1)	Camera height:	1.5 m AGL
Nearest turbine:	44.361 km	Correct printed image size:	820 x 260 mm	Date and time:	16/09/2022, 10:12

Figure: 1.6g
CH Viewpoint 4: 1018919 - Cockersand Abbey